

2024-Q3

# SPLATSIN DEVELOPMENT CORPORATION

## QUARTERLY NEWSLETTER



## IN THIS ISSUE

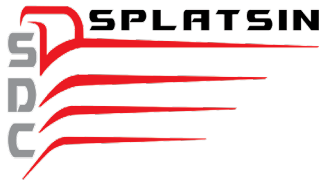
- Welcome from SDC CEO, Grahame Go
- Quilakwa RV Park & Campground Update
- Residential & Commercial Construction Update
- Civil Construction News
- SDC on the Links
- Human Resources News
- What's New in Accounting
- Archaeological Assessments & Heritage Update
- Environmental Planning & Management
- Quilakwa Investments

### OUR MISSION

To create and operate successful businesses, develop sustainable capacity, and generate income opportunities while preserving shared cultural and ecological values for generations to come.

### OUR VISION

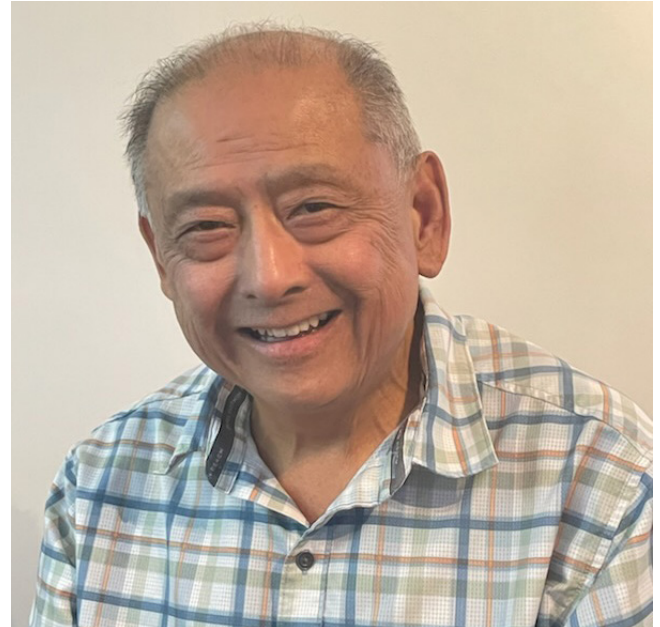
Thriving Splatsin-owned businesses creating genuine wealth for Community.



## A message from Splatsin Development Corporation CEO, Grahame Go

Dear Team,

I am delighted to extend a warm welcome to all team members across our dynamic divisions: SDC Corporate, Yucwmenlúcwu, and Quilakwa Investments. Each branch brings its unique contributions to our collective journey, and I am thrilled to share some exciting updates and initiatives as we forge ahead into the third quarter.



One of our most recent accomplishments is the acquisition of a new excavator and emergency mobile treatment vehicle. These assets have already been deployed on various projects and are generating significant revenue for SDC. As we continue to expand our capabilities, we are also committed to working with and training both Band and community members to become skilled heavy equipment operators. This initiative not only strengthens our workforce but also empowers our community with valuable skills and opportunities.

We are at the forefront of innovation with our upcoming home and commercial building initiatives that will utilize a cutting-edge new building material. This venture reflects our commitment to sustainability and modern construction practices, setting a new standard in the industry.

I am also excited to announce the launch of Quilakwa Consulting, a new branch of Quilakwa Investments. This consulting service is designed specifically for First Nations across the country. Quilakwa Consulting aims to assist communities in developing and enhancing their own service centers, much like our Quilakwa Centre. This initiative will empower First Nations by providing the knowledge and tools needed to build thriving community hubs.

The St. Mary's Church renovation project is on track to be completed by the end of August. Upon completion, the church will not only be restored to its original splendor but will also serve as a vibrant meeting place for events. We have installed a new wheelchair-accessible washroom to ensure inclusivity and comfort for all visitors. Additionally, we are in the final stages of engineering to connect the church and daycare to the city's sanitary sewer system, marking a significant step towards modernizing our community facilities.

In the Lassertie subdivision, we are currently building five house foundations, providing quality housing solutions for our community. The successful completion of the Blake Pit archaeology project marks another milestone in our ongoing commitment to preserving and respecting Splatsin heritage.

Our Yucwmenlúcwu Civil team is gearing up to commence work on the Shuswap North Okanagan Rail Trail, specifically the 1 km section from Armstrong to Landsdown. This project is scheduled to be completed by the end of September 2024. Additionally, the 48 km main Rail Trail contract, a significant \$12.5 million project, is slated to begin soon and will take approximately two years to complete. These projects not only enhance our infrastructure but also reinforce our reputation as leaders in civil construction.

In addition, Yuc Civil is currently completing the site preparation for constructing work portables for the Splatsin Administration team and has secured the contract to tear down the old Splatsin Admin building once it is vacated.

This is an exciting time for SDC as our teams continue to grow and evolve with the addition of key members. Your hard work and dedication are the driving forces behind our success, and I am immensely proud of what we have achieved together.

I wish everyone an enjoyable and safe summer, filled with relaxation and quality time with loved ones. Let us continue to support one another as we build a bright future for our community.

*Grahame*

# Quilakwa RV Park & Campground



## Improved Campground Walkways

At Quilakwa RV & Campground, the team recently picked up and installed 6 x 6 ft walkways to help guests walk through the grasslands to access the beach.

## Happy Birthday, Bryce!

Camp Operator Bryce Tarves celebrated his birthday on July 10 and would like to thank everyone for the birthday card and kind wishes!

## Wood Chip Donation

Tolko recently donated 60 yards of wood chips to help with the revitalization of 2 kilometres of trails throughout the campground!



## Canada Day Long Weekend

The Outdoor Market and Kekuli Fur Trapping Demo at the Quilakwa RV Park & Campground was a great success on the Canada Day Long Weekend.

This weekend event also featured a surprise live performance by Mason Young at the salmon BBQ. The next event like this will be the August 2nd Beach Party. Please check the Quilakwa RV Park & Campground Facebook page for more details!



## Regret to Announce

Long Term Camp guest, Jeff Aubin, who helped build the Quilakwa RV Park & Campground, passed away on June 25. We are deeply saddened as he was very respected and active in the community. Camp Operators Bryce & Ashley applied CPR until emergency services arrived.

# Residential & Commercial Construction Update

## St. Mary's Church Renovation Progressing Well

The renovation of the church is on-budget and on-schedule, with significant progress being made.

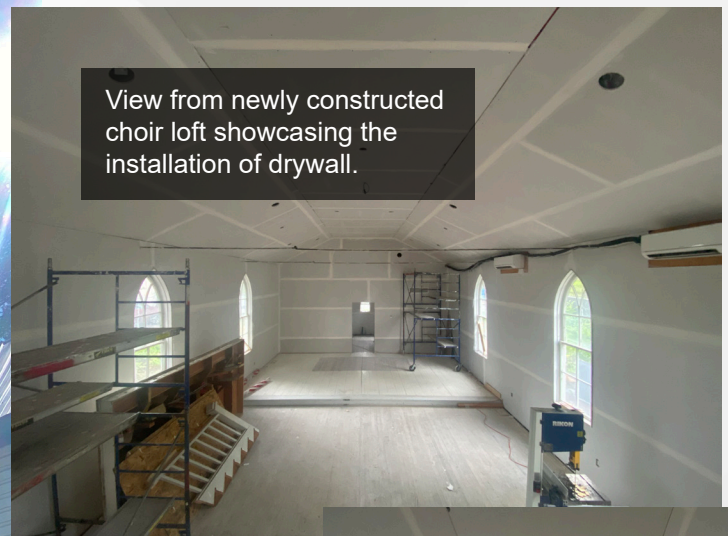
At present, a contractor is painting the exterior of the building after our team replaced damaged siding and trim. We have another contractor working inside finishing the walls and ceiling before the painter moves indoors. Construction will begin shortly on the new wheelchair ramp and stairs.



Clint Felix putting on the finishing touches to the brand new staircase used to access choir loft.

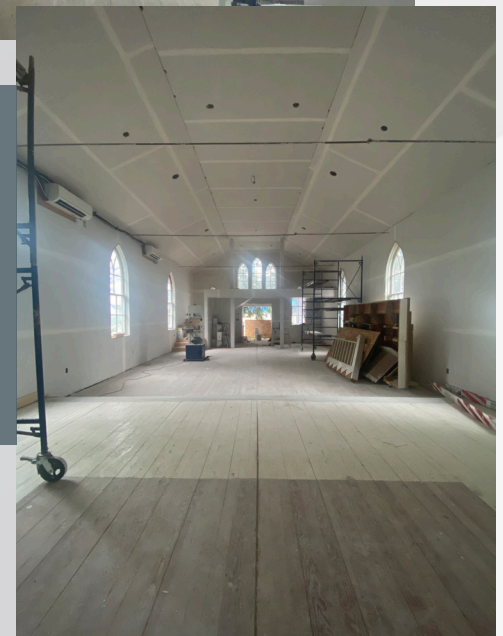


Hoisting the bell tower back in to place after repairing main structure of tower.



View from newly constructed choir loft showcasing the installation of drywall.

View from back of the sanctuary towards the choir loft showcasing drywall installation.



# Civil Construction News

## Strategic Growth: Acquisition of Hitachi ZX 225 USR Excavator

In line with SDC's commitment to continual growth and staying at the forefront of business opportunities, we are thrilled to announce the latest addition to our equipment fleet: the Hitachi ZX 225 USR Excavator.

This acquisition marks a significant step forward for SDC, enhancing our operational capabilities and allowing us to tackle projects with increased efficiency and precision. The Hitachi ZX 225 USR is renowned for its versatility, reliability, and advanced technology, making it an ideal choice for a wide range of construction and excavation tasks.

Key features of the Hitachi ZX 225 USR Excavator include:

- **Compact Design:** Perfect for working in confined spaces without compromising on performance.
- **Fuel Efficiency:** Innovative engine technology ensures lower fuel consumption and reduced emissions.
- **Operator Comfort:** Ergonomically designed cabin with advanced control systems for maximum comfort and productivity.
- **Durability:** Built to withstand tough conditions, ensuring longevity and minimal downtime.



*Adam Christian & Grahame Go with the Seller.*



As our Construction department continues to grow, the Hitachi 225 USR is poised to work even harder, supporting a wide range of projects with its advanced technology and powerful engine. As we continue to leverage its capabilities, the Hitachi 225 USR remains instrumental in achieving our project goals, setting a new standard for efficiency and reliability in our fleet.

We are confident that the integration of this high-performance excavator into our operations will not only bolster our project execution capabilities but also reinforce our commitment to delivering quality and excellence in every endeavor.

# SDC On The Links

## SDC Shines at Splatsin Tsm7aksaltn Golf Tournament!

SDC had the honour of participating in the 2nd Annual Splatsin Tsm7aksaltn (Splatsin Teaching Centre) Society Golf Tournament Fundraiser at Spallumcheen Golf & Country Club on June 7.

This event was an entertaining Texas Scramble, and our team - Frank Joe, Corinna Dafoe, Annette Christian, and Bryce Tarvis - had a blast on the greens.

All proceeds from this event go towards supporting the Splatsin Tsm7aksaltn Society, a non-profit organization providing childcare for 65 children — aged from infants to 12 years old.

We are proud to support such a vital community resource and contribute to the growth and education of our youngest members.



*The SDC Team L-R: Bryce Tarves, Corinna Dafoe, Annette Christian, and Frank Joe.*



Wednesday, September 4, 2024  
Mabel Lake Golf Course

8th Annual

**SDC CLASSIC**  
GOLF & CULTURAL EVENT

## SDC Classic Golf & Cultural Event: Sept. 4, 2024

We are excited to share that the 8th Annual SDC Classic Golf & Cultural Event is set for September 4, 2024, at Mabel Lake Golf Course. Thanks to our amazing sponsors and participants, registration has reached capacity. However, a waitlist is available for those who still wish to join in the fun.

Participants can look forward to various contests throughout the day, adding some competitive spirit and fun to the event. Once the golf is complete, a delightful meal, perfect for networking and unwinding, will be served.

We are proud to contribute 100% of the funds raised to Splatsin Community initiatives, supporting essential programs and services that make a positive impact.

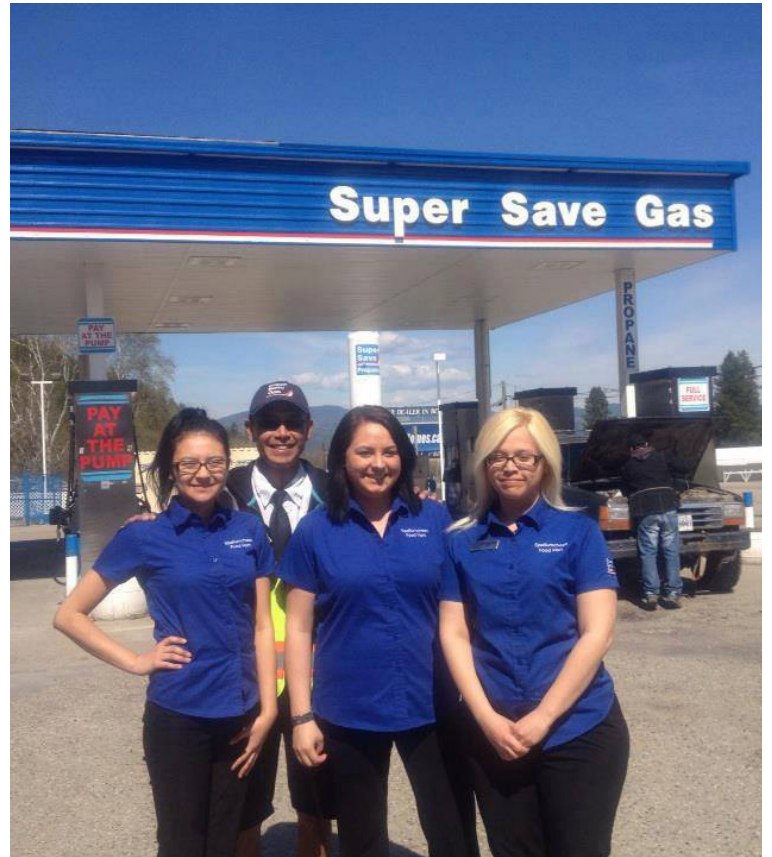
# Human Resources News

## Celebrating 15 Years of Dedication: Brittany Galbraith's Journey with SDC and Quilakwa Investments

We are thrilled to share a remarkable success story that highlights our commitment to hiring and promoting Indigenous teammates at Splatsin Development Corporation (SDC).

Brittany Galbraith, a proud Splatsin Member, joined the Quilakwa team in 2009 as a full-time Gas Jockey. Her journey has been one of resilience, growth, and continuous learning. When the Quilakwa building tragically burned down, Brittany seamlessly transitioned to a cashier role in the temporary store trailer, showcasing her adaptability and dedication.

In 2012, Brittany's growing potential was recognized, and she was offered a position as an Administrative Assistant, under supervision of Quilakwa Centre Store Manager Keith Beckett. Upon Keith's departure, Brittany took on the role of Interim Store Manager until Nik V. joined the Quilakwa team in 2017 as Store Manager.



*Blast from the past: Brittany with the Quil Super Save Gas team.*



*Brittany, SDC Bookkeeper*

Brittany's hard work and talent did not go unnoticed, and in 2021, SDC acknowledged her potential once again, promoting her to a full-time Bookkeeping position. This opportunity allowed Brittany to delve deeper into her career, mastering new skills and expanding her professional horizons.

By 2023, Brittany had an opportunity to broaden her expertise further by taking on Payroll responsibilities alongside her Bookkeeping duties. With the unwavering support of Splatsin Development Corp., she completed her first Payroll course with outstanding results, thanks in large part to the mentorship provided by Lynn. Looking ahead, Brittany plans to pursue a Bookkeeping certificate and continue deepening her knowledge of Payroll.

When reflecting on her experiences at SDC, Brittany expressed profound gratitude for the support she has received from management, particularly Grahame and Nik. She credits these leaders with being a constant source of encouragement, always believing in her potential and striving for her success.

Congratulations to Brittany on reaching her 15-year milestone with SDC. Your dedication, resilience, and continuous pursuit of excellence make you an invaluable member of our team. Here is to many more years of growth and success together!

# What's New in Accounting

## Celebrating Success: Payroll Compliance Course Triumph!

The accounting team is thrilled to announce that Brittany Galbraith and Danni Burke have completed the Payroll Compliance course through the National Payroll Institute. Danni is also planning to pursue the payroll designation through the National Payroll Institute starting this fall.

As Lynn Nadau plans to move back East, the Accounting Team will assume all payroll duties. We have the utmost confidence in their abilities and know that they will do a fantastic job. No date has been set for Lynn's departure, but we hope to keep her with us as long as possible.



*Lynn Nadeau and Brittany Galbraith*

# Archaeological Assessments & Heritage Update

## Project Net Zero Now Complete

Project Net Zero Archaeology site work has been completed as of May 2, 2024.





# Environmental Planning & Management

## Training

In June, Yucwmenlúcwu staff Shanon Basil and Kyle Krahn completed Swiftwater Rescue Technician and Cabin Aquatic Biomonitoring Network (CABIN) field training in the lower mainland. The CABIN field training was preceded by numerous modules of online course work and the swiftwater training just required us to show up with all our instream gear! Trainees from across BC went to North Vancouver to learn hands-on skills in teams that included kick-net sampling and invertebrate identification as well as measuring stream grades and assessing composition of aquatic habitats. CABIN certification provides Yucwmenlúcwu teams the ability to plan and execute projects to assess the health and quality of water in streams and identify areas or sources of pollution by sampling the insects found in the water.

The Swiftwater Training was a gruelling, yet fun, three days of training including exercises and practice of typical and not so typical swiftwater rescue scenarios. Having rescue skills and experience among our fisheries team is necessary to keep our teams safe working in and alongside rivers and streams through-

## Fishing

Fishing season is coming up, so keep an eye on the Splatsin Facebook page for fishing in-season updates and events. We are planning to post the opening dates as soon as we're informed!

Yuc is currently seeking to hire a Catch Surveyor to help us document community fishing practices in support of Splatsin exercising their fishing Rights. The contract for this position is expected to be up to eight (8) weeks in length and be staged out of the 506 Cliff Avenue office.

If you are Splatsin and interested in fish and/or fishing and have interest and ability to keep tidy reports, please email [YucEnvironment@splatsindc.com](mailto:YucEnvironment@splatsindc.com) to express your interest and set-up an interview. All ages are welcome and encouraged to apply!



*Shanon and Kyle geared up for Day 3 of Swiftwater Training on the Chilliwack River.*



*Shanon, Kyle, and other trainees that were certified as Swiftwater Rescue Technicians.*



*Kyle after a tough swim and self-rescue. Photo credit: Shanon.*

## Updates on Project Initiatives

- Water monitoring is underway. In July, Yuc crews installed hydrometric stations on Salmon River and Besette Creek to monitor water levels and flow volumes for another season in collaboration with the Secwepemc Fisheries Commission.

A Splat-sin-owned hydrometric station was recently acquired and will be installed on Fortune Creek in the coming days.

- Yuc is working with Ecoscape Environmental Consultants Ltd. to enhance instream and stream-bank habitat on the Lower Shuswap River in select areas. Currently in the permitting process, enhancements are anticipated to go ahead later this year/summer.

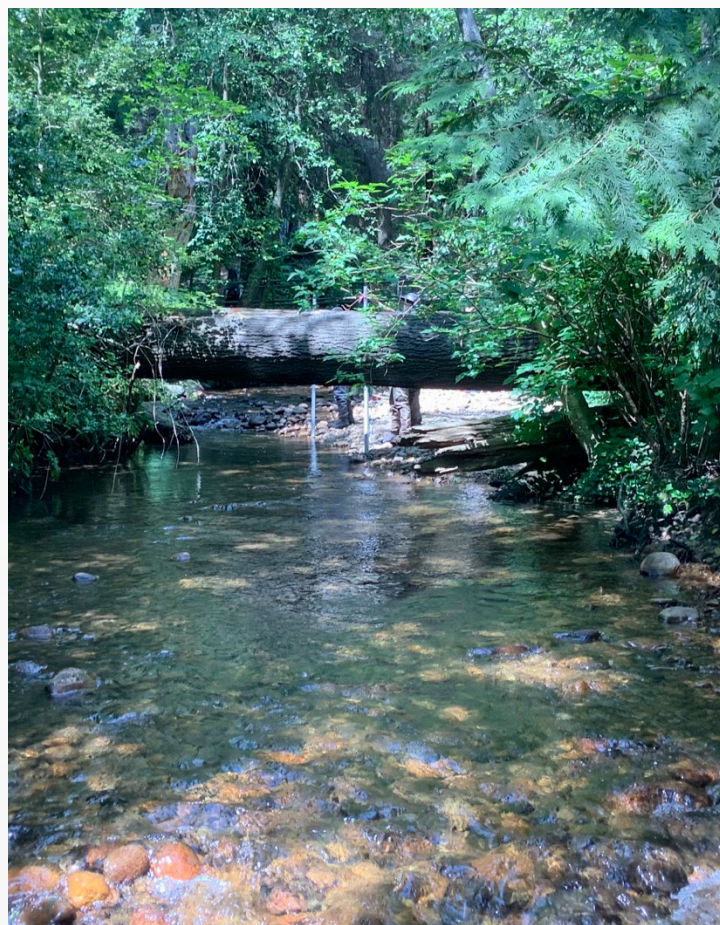
If you are floating the river later this summer, you may see our environment and cultural monitoring crews on the Shuswap riverbank; give them a wave!

- Later this year, our team will be studying inland lakes and the fish inhabiting them by conducting streamwalks and limnology trawls around Arrow Lakes Reservoir, which is part of the Columbia River system. We'll also be supporting work at Hill Creek Spawning Channel located near Galena Bay and the Incomappleux River delta.

Yuc crews are also anticipating working alongside provincial government employees to install a resistivity counter on the Upper Shuswap River to count and collect data on the Bull Trout sub-population found in Sugar Lake.

These are just some of the many ways that Yucwmenlúcwu works to collect data and keeping our proverbial finger on the pulse of Séwllkwe (water) and sqélten (salmon) in the Splat-sin Area of Caretaker Responsibility.

- Splat-sin Title & Rights will be hosting a community meeting with Splat-sin fishers and Yucwmenlúcwu will be supporting along side Fisheries and Oceans document author, who will capture to incorporate community values and input from those in attendance to improve and align DFO-created guidelines with Splat-sin values in late July.



## Breeding Bird Nest Surveys Reveal Active Nests at a Construction Site on Splatsin IR#2

Since late May, Yucwmenlúcwu has been actively involved in Fortis' Inland Gas Upgrades – Phase 5 project and sites in Spallumcheen and Enderby. The Yucwmenlúcwu team has been providing environment support with management planning, wildlife surveys, invasive plant inventories, as well as weekly environmental monitoring and reporting, alongside Cultural Heritage crews, at numerous temporary work sites. One site you might have noticed is behind the Quilakwa gas station and the SDC headoffice. The work site is on private land adjacent to the top of the BC Hydro powerline right-of-way and early works and construction crews have been utilizing an upgraded road to access the site.

Our environment team has spent many early mornings on site before construction crews arrived, conducting breeding bird nest surveys and wildlife “sweeps” of temporary work sites and surrounding areas. During these surveys, environmental monitors search for active nests and signs of wildlife to inform brushing crews of any wildlife risks or concerns identified. If a nest is confirmed to be active, a “no work zone” buffer is established around it, and additional mitigations are sometimes implemented to minimize disturbances to the nestlings and adults caring for them. Did you know that active breeding bird nests are protected by provincial and federal law?

A prime example of our efforts occurred on July 2nd when our team discovered a second active Lazuli Bunting (LABU) nest within the vicinity of a temporary work boundary (Image 1). The nest had three nestlings in it upon discovery. Subsequently, both adults were also observed at that nest and feeding the young. With a temporary access road planned within 15 meters of the nest, we recommended a 20-meter-long visual barrier be installed. The seven foot tall “bird blind” was made from metal T-posts and geotextile fabric to reduce potential direct line-of-sight disturbances to the nest from heavy machinery. During barrier installation and while clearing and brushing crews work in the vicinity of the nest, an environmental monitor observed the nest through binoculars, watching the adult birds' behaviors including their stress levels as trucks and equipment moved past them while they took care of their young.

We noticed that as work activities and vehicle travel approached, the adult male Lazuli Bunting switched from their typical melodic song to an alarm call. The alarm call, similar to a chirp or “tseep”, typically indicates a bird's rising stress level, an expression of their concern for security. Fortunately, often, it did not take long for the adults to return to their song and the seemingly full-time task of feeding those hungry mouths!

As the project continued, so did our nest monitoring. A few days after discovering the nest with three nestlings, we confirmed that only two nestlings remained. Despite the challenges, we remained hopeful for a successful outcome. On July 10, we found the nest empty for the first time (Image 2).

Based on what we know about the nestling period for Lazuli Buntings (~ 9 to 11 days), it's realistic to assume that one or more of the nestlings successfully fledged and ventured from the nest. Unfortunately, we did not observe the first flights made but it was exciting to watch what we were able within our time frame of project activities (Image 3).

A total of seven (7) nests were discovered in the vicinity of the temporary work site behind Quilakwa in varying stages of activity during the project (Image 4). At the time of writing this, one of those nests, a Cedar Waxwing (CEWA), is still active with adults consistently observed roosting. Its always a treat to observe a nest in process of raising its young! Both CEWA parents typically incubate their eggs for up to 16 days before they hatch and another 14 to 18 days before the fledglings typically take their first flight and leave the parents as empty nesters. Credit is due to the visual barrier mitigation and the attentive early works and Skwlax Resource Management crews, who worked quickly and mindfully near the active LABU nest.

If you'd like to learn more about birds, see: [www.allaboutbirds.org](http://www.allaboutbirds.org) and, if you'd like to know what is that bird singing near you, download the Merlin Bird ID app for your phone!



*Image 1. An active Lazuli Bunting nest, with three (3) young nestlings, still bald and with eyes shut, discovered July 2, 2024.*



*Image 2. The empty Lazuli Bunting nest, July 10, 2024.*



*Image 3. Two LABU nestlings ready to be fed! Taken July 5, 2024.*



*Image 4. Google Earth screenshot showing all active (yellow) and no longer-active (green) nest locations, observed on July 5, 2024.*

# Quilakwa Investments

## Superhost Training

On July 3, 2024, Quilakwa Investments team members participated in Superhost training, which went exceptionally well. The group was very engaged, making the experience enjoyable for everyone involved.

Below are a few snapshots of one of the communication activities they completed during the training. Each team member received a certificate for successfully completing the course.



Training was held in the SDC Boardroom.